



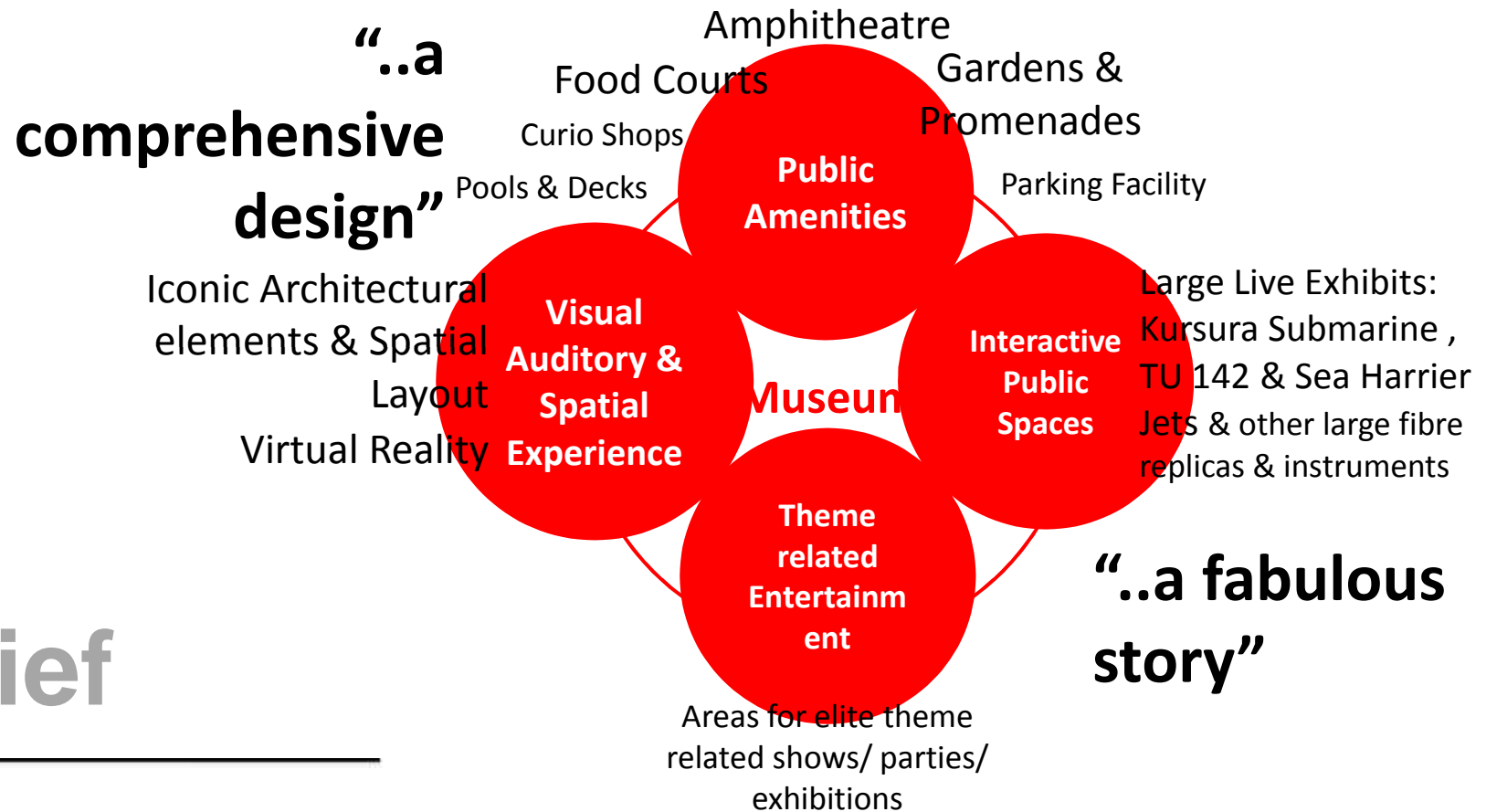
Submarine Heritage Museum

Architecture & Design Proposal - July 2018

Visakhapatnam, Andhra Pradesh



Requirements



Project Brief



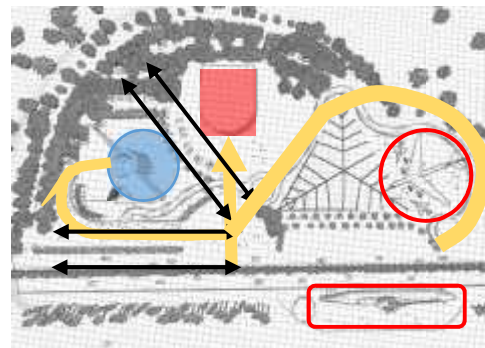
Site Option(A)
 (Either by maintaining Rajiv Smriti Bhavan or not)

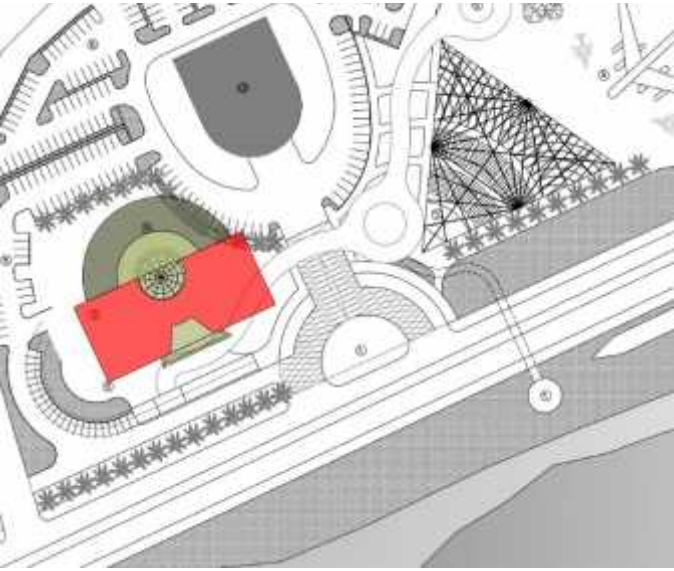


Site Option(B)
 Plot behind AU Convention centre

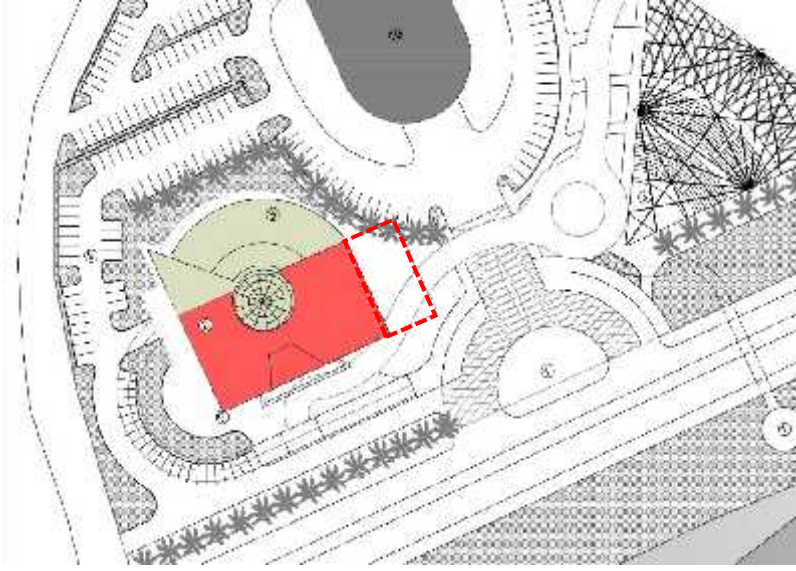
A Flexible primary architectural language adaptable for different sites

- straight planes, creating vistas and sensible circulation patterns.
- simple and pure forms that can work flexibly in different site configurations
- Aims to incorporate landscape as part of museum experience





Option1






Option 2



Option 3

OPTIONS FOR INCORPORATING Rajiv Gandhi Smriti Bhavan

The proposed building for submarine museum can be worked out by retaining the existing structure and by making minor modifications.

-  Area Retained
-  Area Deleted
-  Area Added/Modified

Blending with Landscape

Active engagement with Seaside Landscape

A building that fits into the seaside landscape and incorporates its vistas.

Maximizing perception of space:

- A glass and steel structure
- Water pools
- Double glazed walls
- Projection screens and multipurpose halls are also included.



A “non-building” to keep the element of mystery

Movement through the Vertical space

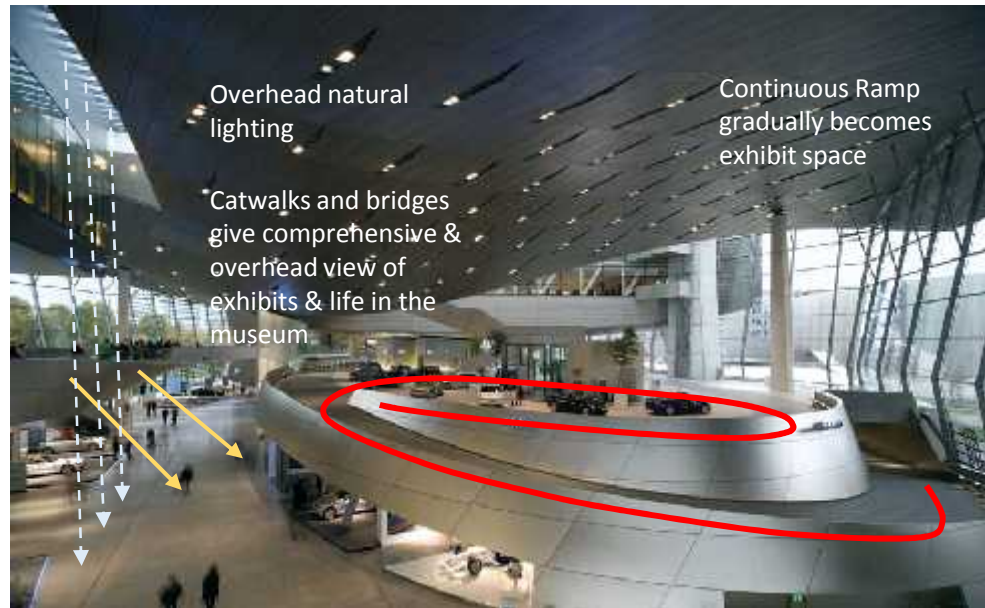
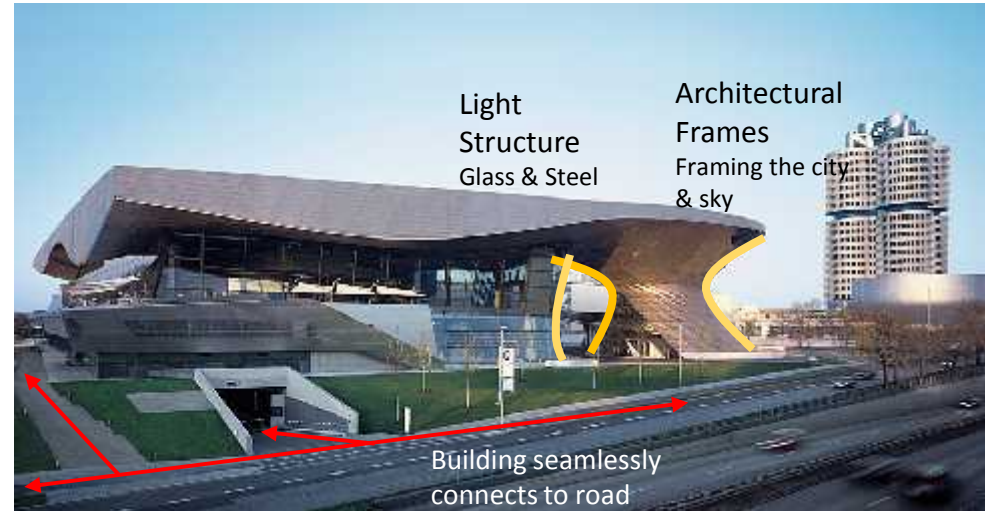
Using a building language of catwalks, bridges and ramps to experience the building and view exhibits





Millennium Park, Chicago

The park interfaces various urban blocks and integrates surrounding cityscape



BMW Welt and Museum, Munich, Germany

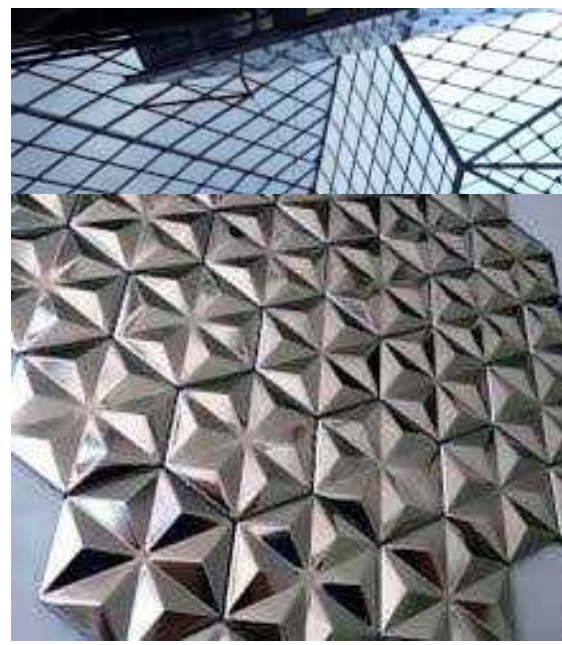


01 SITING The proposed building is sited such that it is in proximity to the INS Kursura and TU 142, capturing views, encompassing the surrounding seascape & to create a visual pointer on the unpunctuated landscape

Design Process of Submarine Museum

03

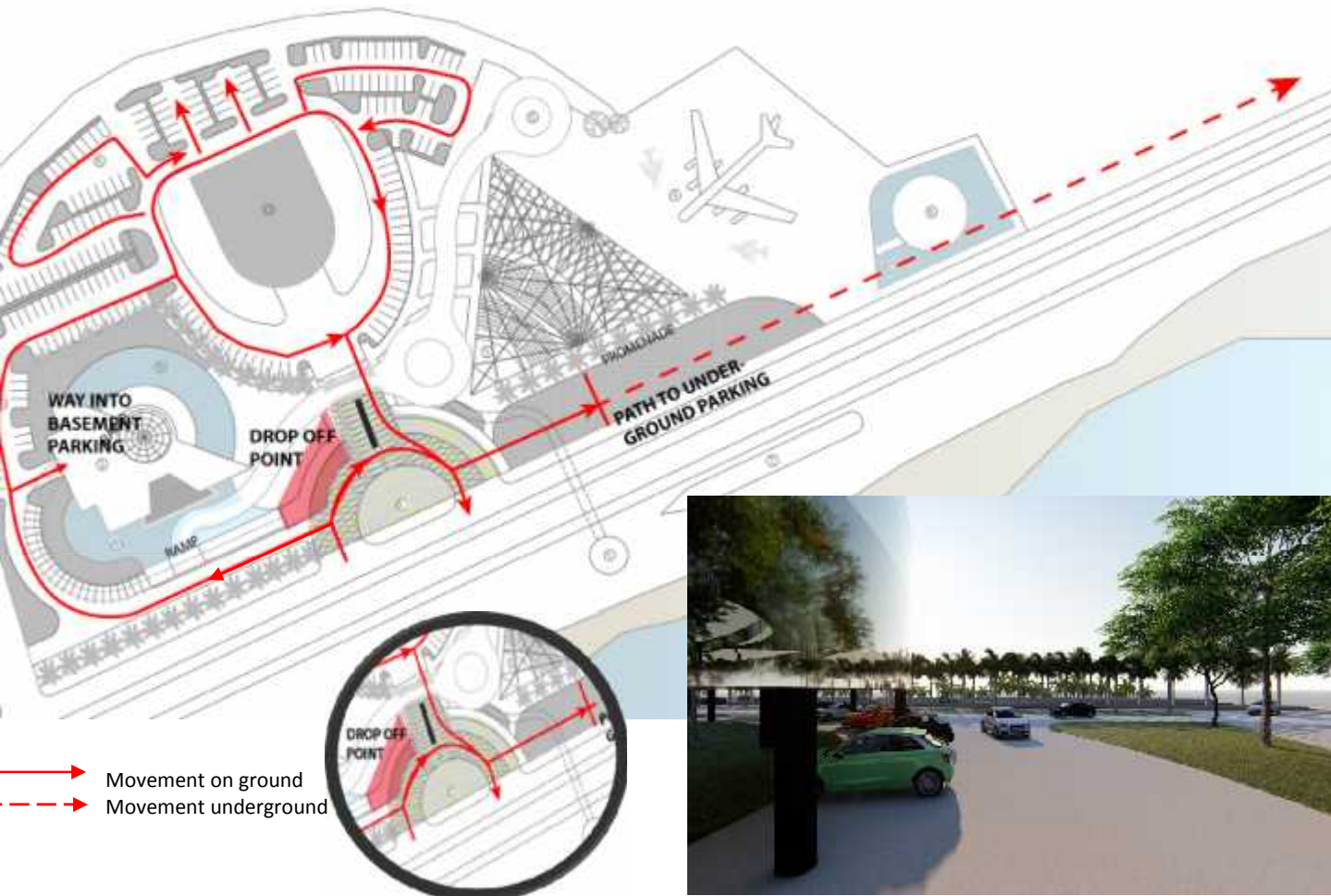
- STEEL & GLASS
- WATER POOLS
- SMART SURFACES
- BRIDGE S/CATWALKS/RAMP



02 BUILDING LANGUAGE



- 1. Entrance Plaza
- 2. Main Museum
- 3. Open Air Theatre
- 4. TU 142
- 5. Serpentine Gallery
- 6. Tower/Windmill (Optional)
- 7. INS Kursura
- 8. Pedestrian Bridge
- 9. Parking
- 10. Reflecting Pool
- 11. Existing Building AU Convention Centre
- 12. Sea



01 On site & Basement of Main Museum
 600 No.s for Cars & 2Wheelers each
PARKING



02 Underground Parking
 600-700 No.s for Cars & 2Wheelers each if
 underground basement is developed upto YMCA
 Parking Lot



01 MAIN MUSEUM

- 3 Floors of 16,575 SQ. Ft area each with themed sub galleries
- A continuous ramp with restaurants/kiosks



02 SERPENTINE GALLERY

- Total Length of 200 m with a 30 minute walk time



03 OPEN AIR RIBBED THEATRE

- Has a capacity of 1500 person (+ option to expand for 1500 more)
- A tensile structure with exterior fabric



04 PROMENADE

- Wide pedestrian stretches for jogging/walking & free movement of people



A Museum Experience drawn from the landscape & urbanity of Visakhapatnam

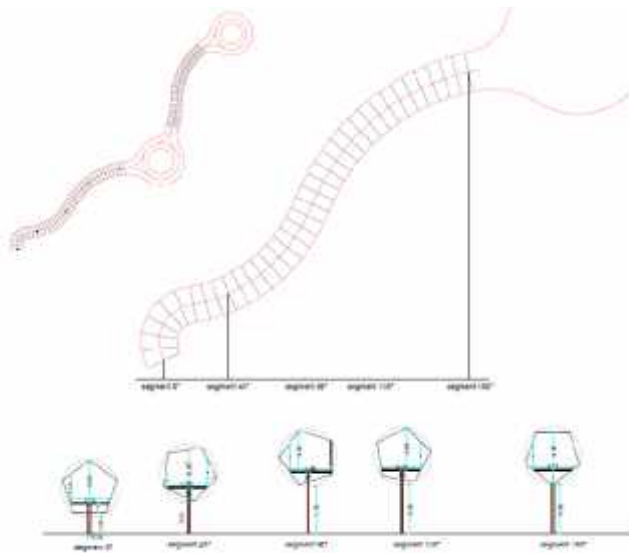


AERIAL VIEW



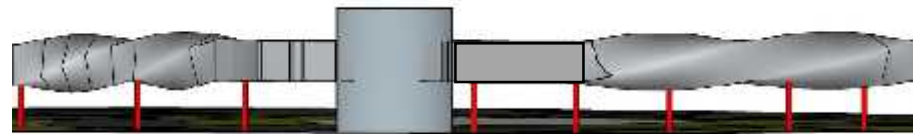
Ride in the Serpentine Gallery

Ties the site and various components
Offers a 30 minute ride
animated by VR/ spatial
media displays
200 m Length with two
pods to enter and exit



Schematic serpentine cross-section at various points

Interior concept

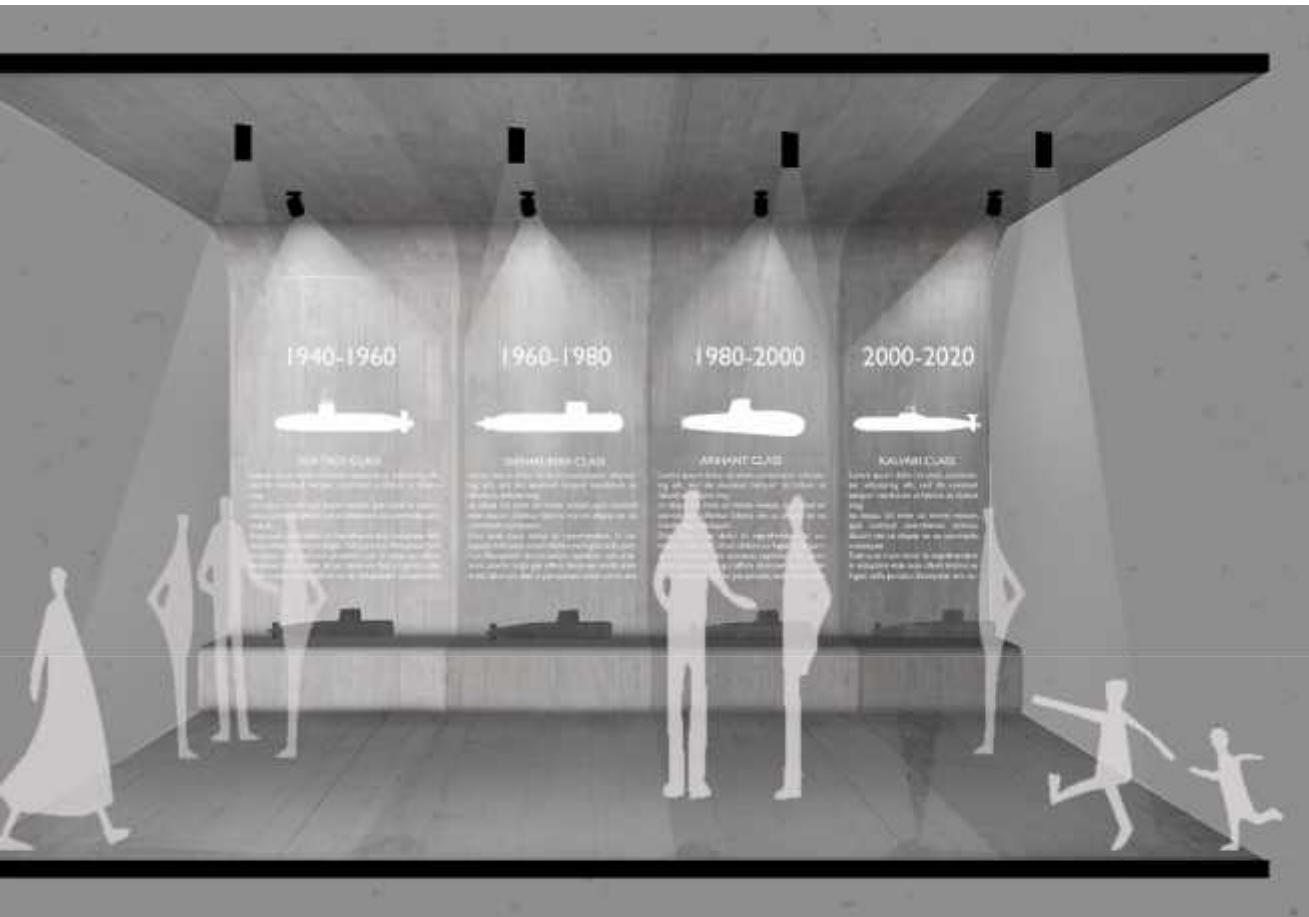


- Is cantilevered continuously by a steel supports with height of 4 metres ground.
- Cladded with emb stainless steel (weatherproof) 6m x 6m pentagon section that twists the length
Ducts provided in 50 cm deep clear s below interior deco service lines
Streamlined to let winds pass



Reflective Surfaces

magnify sense of space & helps integrate design
with the landscape



flexible interiors

allow the museum to be partitioned & to accommodate new and emerging technology

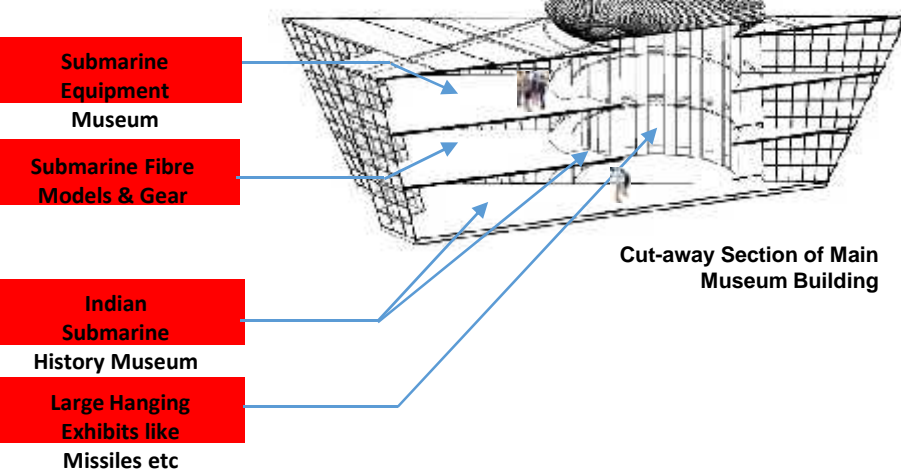


Interiors

Flexible museum space accommodates current & future technology



Museum exhibits are split among three levels of the museum :



VR Experience of Piloting a Submarine

Display of Actual Submarine Equipment

Mock-up spaces with equipment/ gear displays

Badges of Honour

Drills/Disaster management/Social Service

Infographic display panels

Control models of different classes of submarines + timeline missions

How does a Submarine Work?

Life of an Indian Naval Submarine Officer

50 Years of India Submarines

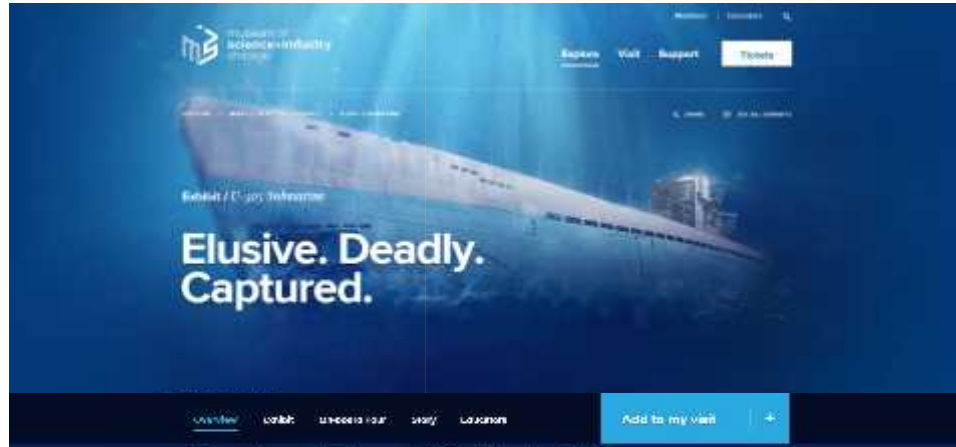
Creating a Story

Group exhibits thematically to tell a good story



SeaWorld, San Diego

Simulated rides incorporated into the experience that narrates the story of the submarine through movement



Museum of Science + Industry, Chicago

Aboard a re-created sub environment, climb through the hatch and experience the sights, sounds and feel that was reality for the U-505's 59 sailors during wartime.



Spatial Media animation

A play of VR, Digital & Physical Displays



Victory Memorial

REFLECTIVE
URBAN
MARKER

RECREATIO
NAL PARK

UNDER-
GROUND
GALLERY
OF HEROES

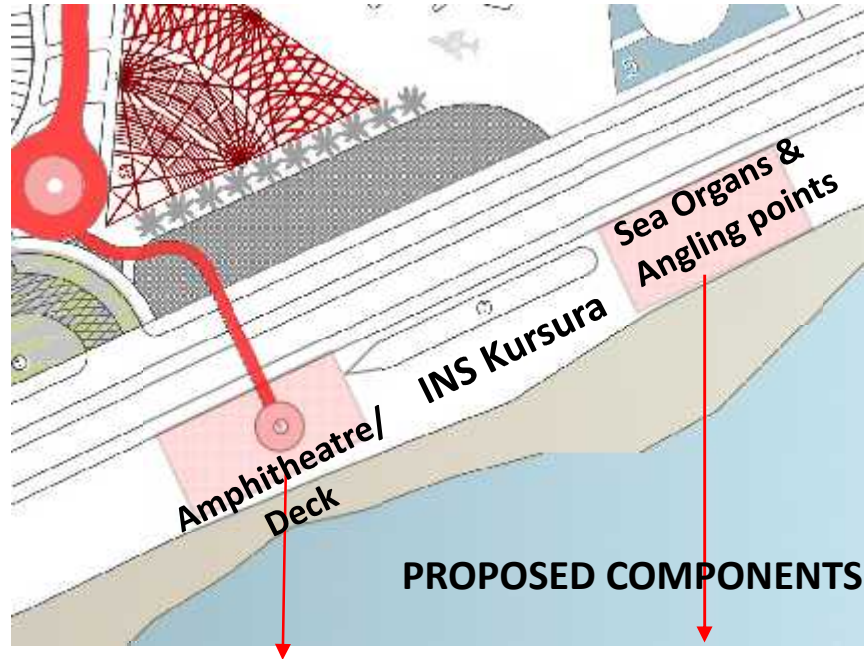
Site Area: 20,000 SQ FT

- 95 m long site sloped up to 2m height.
- Length of plot used for a recreational park with waterbody.
- Tower Height: 11m + 4 m high mini gallery below

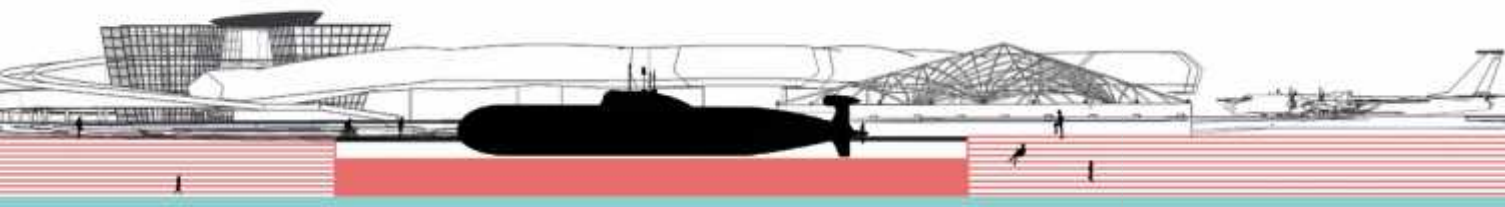
CLOCKWISE FROM TOP: 1) Aerial View of Site 2) view from Podium 3) Reflective Tower element to capture landscape 4) Way towards underground gallery 5) Steps form dome of gallery+ Ramp leads down to underground gallery

Beachfront Development

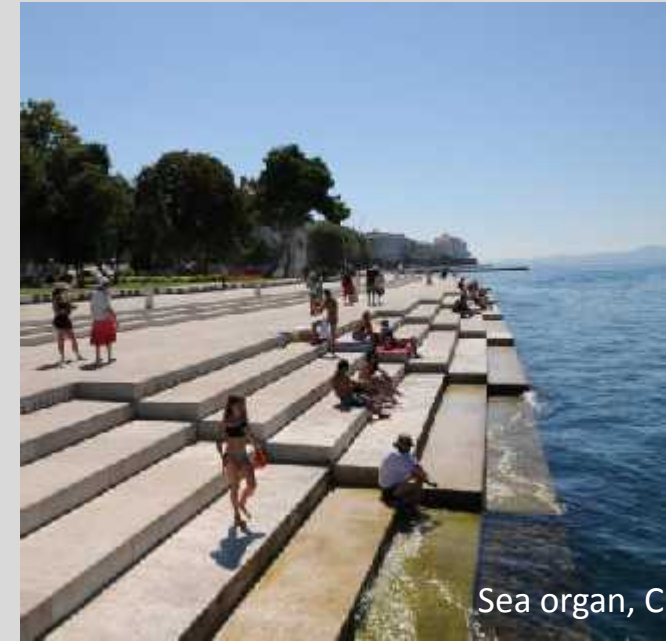
- SUN DECKS
- STEPPED SEATING
- ANGLING POINTS



The Submarine Museum acts as a backdrop for the integrated beach development on the Kursura Side



Schematic Section



Sea organ, C

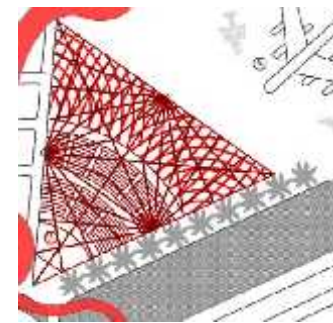


Scheveningen Beach,

References

Proposed Phasing of Submarine Museum

Indicative cost is mentioned



STAGE I

STAGE II

STAGE III

<p>Main Museum</p> <p>Continuous Ramp</p> <p>Landscaping</p> <p>Museum Interiors</p>	<p>Serpentine Gallery</p> <p>2 Pods</p> <p>VR Displays</p> <p>Sea Harrier</p>	<p>Open Air Theatre</p>	<p>Wind Turbine</p> <p>Beachfront</p>
<p>29,945 SQ.FT (Main Museum) + 1,02,257 SQ.FT (Landscape)</p> <p>15 CR</p>	<p>15,500 SQ.F (S. Gallery) + 5715 SQ.FT (Pods)</p> <p>9 CR</p>	<p>37,750 SQ.FT</p> <p>5-8 CR</p>	<p>6,652 SQ.FT</p> <p>5-8 CR</p>

Thank you